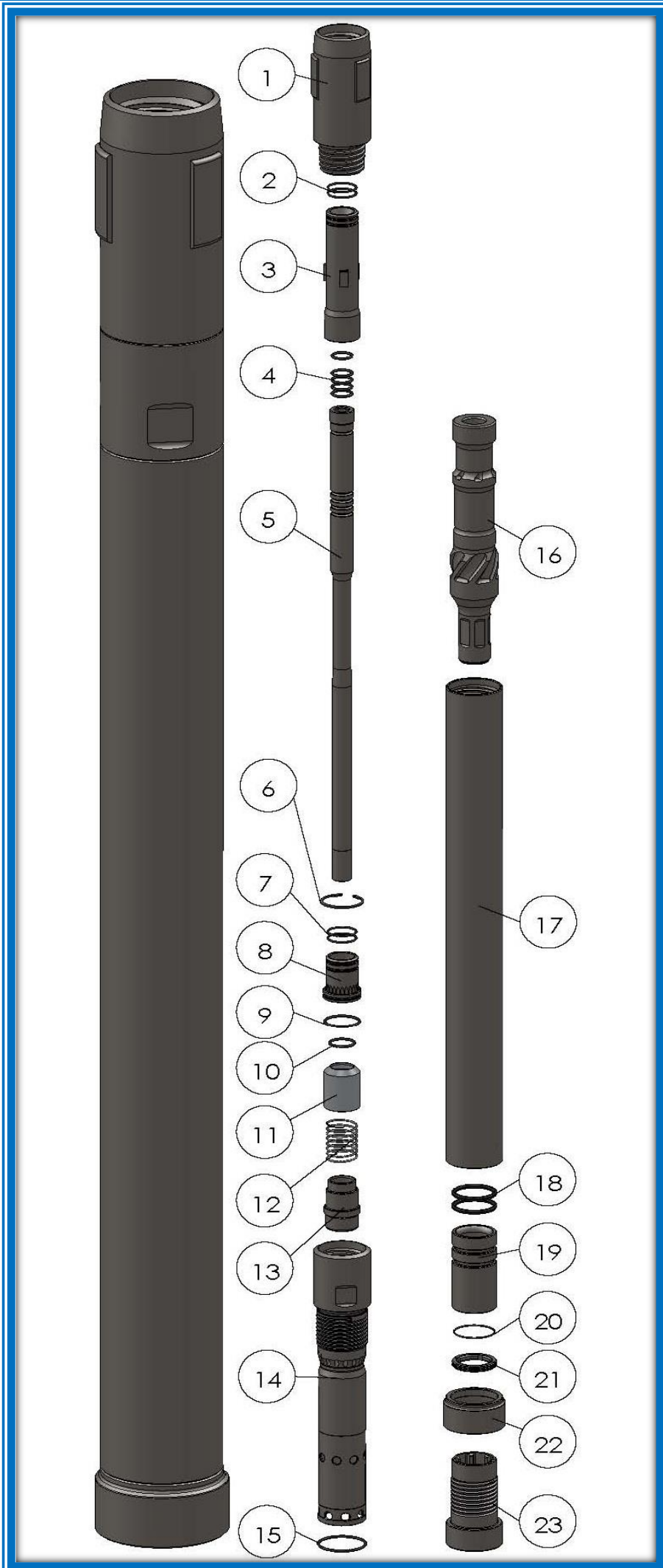


## ▶ RW3340 Reverse Circulation Hammer ◀



### COMPONENT PART

Item #	Description	Q'ty	Part #
1	Top sub 3inch Remet	1	RW334001-R30
2	Adaptor tube 3inch Remet O'ring	2	RW334002-R30
3	Adaptor tube 3inch Remet	1	RW334003-R30
4	Sample tube O'ring	5	RW334004
5	Sample tube	1	RW334005
6	Circlip	1	RW334006
7	Distributor nozzle for upper O'ring	2	RW334007
8	Distributor nozzle	1	RW334008
9	Distributor nozzle for lower O'ring	1	RW334009
10	Air check valve O'ring	1	RW334010
11	Air check valve	1	RW334011
12	Air check valve Spring	1	RW334012
13	Guide sleeve	1	RW334013
14	Back head	1	RW334014
15	Back head O'ring	1	RW334015
16	Piston	1	RW334016
17	Wear sleeve	1	RW334017
18	Bearing rubber	2	RW334018
19	Bearing	1	RW334019
20	Bit retaining O'ring	1	RW334020
21	Bit retaining	1	RW334021
22	Shroud	0	*Option*
23	Drive sub	1	RW334023

### HAMMER SPECIFICATIONS

	English	Metric
<b>Length (w/o drill bit)</b>	42.126"	1,070 mm
<b>Outside Diameter</b>	3.189"	81 mm
<b>Weight (w/o bit)</b>	48.5 lbs.	22 kg
<b>Cylinder Bore</b>	2.693"	68.4 mm
<b>Piston O.D.</b>		2.689"
<b>Piston Stroke</b>	2.756"	70 mm
<b>Piston Weight</b>	95.04 lbs.	4.65 kg
<b>Hole Sizes</b>	3-3/8" ~ 4"	86 mm ~ 101.6 mm
<b>Air Pressure Consumption</b>	150 psi ~ 400 psi	10 bar ~ 27 bar
<b>Wrench Size</b>	A/F 2.99"	76 mm
<b>Connection</b>		Std. 3" Remet

### AIR CONSUMPTION CHART

PSI	100	150	200	250	300	350	400
<b>bar</b>	-	10.3	15.3	17.2	20.7	24.1	27.5
<b>cfm</b>	-	220	300	340	415	504	585
<b>m<sup>3</sup> /min</b>	-	6.2	8.5	9.6	11.8	14.3	16.6